



# GAFCO

GULF AIR FILTERS



## BAG AIR FILTERS

### Quick Facts

- ♣ Layered Media
- ♣ Fiber Glass or Synthetic
- ♣ MERV 9, 11, 13, 14
- ♣ Low Pressure Drops
- ♣ Very Long Lasting



**Classified MERV 9**  
40-45% Efficiency



**Classified MERV 11**  
60-65% Efficiency



**Classified MERV 13**  
80-85% Efficiency



**Classified MERV 14**  
90-95% Efficiency



GAFCO's Bag Air Filters carry several unique filtration properties! Air entering these filter is exposed to several stages of filtration layers for large particle attraction, the final layers feature extreme density and are formed from charged micro fibers, this gradient structure insures excellent air flow, long service life, and extremely low pressure drops, while single layered Bag Filters do not carry such features, they are usually restrictive and cause AC systems to malfunction and continuously operate at peak increasing power consumption!



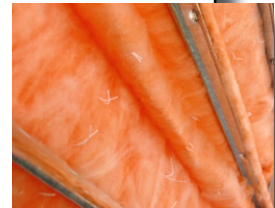
# GAFCO

## GULF AIR FILTERS



## FIBER GLASS & SYNTHETIC Bag Air Filters

GAFCO's Bag Air Filters are the ideal solution for most applications, these pocket type filters come in either Ultra fine Fiber Glass media, or Synthetic media featuring four layers of charged micro fibers, both types of filters offer superior filtration and service life, extremely low pressure drops and high dust holding capacities.



The Filters are constructed from galvanized steel frames and channels, Fiber Glass versions are stitched into individual pockets and sealed with thermoplastic resin with the edges finished with a four thread over lock stitching to prevent air bypass. Synthetic versions are ultrasonically sealed into individual pockets and then bonded to the rings, filter headers are reverse-hemmed edges for safety.

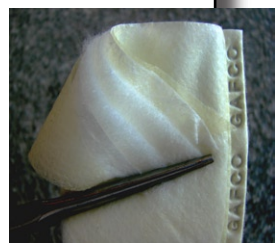


GAFCO's Bag Air Filters are used in application where the highest efficiency filtration is required. However, It is difficult to clean the media once they are clogged with particles. As a result, the filters are often used on disposable basis.



In practice, two indicators are used to determine the need for filter servicing: a 15% decrease in air flow, or an increase in two or three times the initial resistance, the intervals between replacements varies according to application, type of filters, and stage of job application.

For assistance regarding pocket count, depth, and capacities, please consult the performance data provided in this catalog. Also, your GAFCO's Sales Representative is at your service to work out the best choice for your specific systems by evaluating the selection criteria which are important to you.



# GAFCO



## Fiber Glass Bag Filters - Eff.95% - Technical Specs

Filter Model Code Number	Nominal Sizes H X W X D (INCHES/MM)	Number Of Pockets	Rated Air Flow (CFM)	Initial Resistance (Inches w.g.)	Final Resistance (Inches w.g.)	Media Area Sq.Ft.
FGB95-242412P12	24" x 24" x 12"	12	1,420	0.25	0.35	67
FGB95-242412P06	24" x 24" x 12"	6	1,135	0.25	0.35	51
FGB95-122412P03	12" x 24" x 12"	3	700	0.25	0.35	30
FGB95-242422P10	24" x 24" x 22"	10	1,875	0.30	0.40	77
FGB95-242422P08	24" x 24" x 22"	8	1,778	0.30	0.40	65
FGB95-242422P06	24" x 24" x 22"	6	1,750	0.30	0.40	52
FGB95-242022P08	24" x 20" x 22"	8	1,555	0.30	0.40	65
FGB95-242022P07	24" x 20" x 22"	7	1,524	0.30	0.40	57
FGB95-242022P05	24" x 20" x 22"	5	1,505	0.30	0.40	40
FGB95-202022P08	20" x 20" x 22"	8	1,179	0.30	0.40	58
FGB95-202022P07	20" x 20" x 22"	7	1,310	0.30	0.40	45
FGB95-202022P05	20" x 20" x 22"	5	1,235	0.30	0.40	41
FGB95-241222P05	24" x 12" x 22"	5	955	0.30	0.40	38
FGB95-241222P04	24" x 12" x 22"	4	895	0.30	0.40	32
FGB95-241222P03	24" x 12" x 22"	3	845	0.30	0.40	29
FGB95-242429P08	24" x 24" x 29"	8	2,480	0.35	0.45	91
FGB95-242429P06	24" x 24" x 29"	6	2,405	0.35	0.45	77
FGB95-241229P04	24" x 12" x 29"	4	1,258	0.35	0.45	50
FGB95-241229P03	24" x 12" x 29"	3	1,220	0.35	0.45	39
FGB95-242432P12	24" x 24" x 32"	12	2,650	0.38	0.47	129
FGB95-241232P06	24" x 12" x 32"	6	1,265	0.38	0.47	73
FGB95-242436P08	24" x 24" x 36"	8	2,580	0.38	0.52	107
FGB95-242436P06	24" x 24" x 36"	6	1,780	0.38	0.52	85
FGB95-242036P05	24" x 20" x 36"	5	1,513	0.38	0.52	75
FGB95-241236P04	24" x 12" x 36"	4	1,280	0.38	0.52	57
FGB95-241236P03	24" x 12" x 36"	3	890	0.38	0.52	49

# GAFCO



## Fiber Glass Bag Filters - Eff.85% - Technical Specs

Filter Model Code Number	NOMINAL SIZES H X W X D (INCHES/MM)	Number Of Pockets	Rated Air Flow (CFM)	Initial Resistance (Inches w.g.)	Final Resistance (Inches w.g.)	Media Area Sq.Ft.
FG885-242412P12	24" x 24" x 12"	12	1,510	0.25	0.35	67
FG885-242412P06	24" x 24" x 12"	6	830	0.25	0.35	51
FG885-122422P03	12" x 24" x 12"	3	910	0.25	0.35	30
FG885-242422P10	24" x 24" x 22"	10	1,745	0.30	0.40	77
FG885-242422P08	24" x 24" x 22"	8	1,750	0.30	0.40	65
FG885-242422P06	24" x 24" x 22"	6	1,757	0.30	0.40	52
FG885-242022P08	24" x 20" x 22"	8	1,405	0.30	0.40	65
FG885-242022P07	24" x 20" x 22"	7	1,516	0.30	0.40	57
FG885-242022P05	24" x 20" x 22"	5	1,509	0.30	0.40	40
FG885-202022P08	20" x 20" x 22"	8	1,180	0.30	0.40	58
FG885-202022P07	20" x 20" x 22"	7	1,305	0.30	0.40	45
FG885-202022P05	20" x 20" x 22"	5	1,232	0.30	0.40	41
FG885-241222P05	24" x 12" x 22"	5	885	0.30	0.40	38
FG885-241222P04	24" x 12" x 22"	4	879	0.30	0.40	32
FG885-241222P03	24" x 12" x 22"	3	875	0.30	0.40	29
FG885-242429P08	24" x 24" x 29"	8	2,510	0.35	0.45	91
FG885-242429P06	24" x 24" x 29"	6	2,498	0.35	0.45	77
FG885-241229P04	24" x 12" x 29"	4	1,252	0.35	0.45	50
FG885-241229P03	24" x 12" x 29"	3	1,255	0.35	0.45	39
FG885-242432P12	24" x 24" x 32"	12	2,570	0.38	0.47	129
FG885-241232P06	24" x 12" x 32"	6	1,257	0.38	0.47	73
FG885-242436P08	24" x 24" x 36"	8	2,417	0.38	0.52	107
FG885-242436P06	24" x 24" x 36"	6	1,761	0.38	0.52	85
FG885-242036P05	24" x 20" x 36"	5	1,505	0.38	0.52	75
FG885-241236P04	24" x 12" x 36"	4	1,220	0.38	0.52	57
FG885-241236P03	24" x 12" x 36"	3	875	0.38	0.52	49

# GAFCO



## Fiber Glass Bag Filters - Eff.65% - Technical Specs

Filter Model Code Number	NOMINAL SIZES H X W X D (INCHES/MM)	Number Of Pockets	Rated Air Flow (CFM)	Initial Resistance (Inches w.g.)	Final Resistance (Inches w.g.)	Media Area Sq.Ft.
FG865-242412P12	24" x 24" x 12"	12	1,510	0.25	0.35	67
FG865-242412P06	24" x 24" x 12"	6	1,115	0.25	0.35	51
FG865-122422P03	12" x 24" x 12"	3	780	0.25	0.35	30
FG865-242422P10	24" x 24" x 22"	10	1,760	0.30	0.40	77
FG885-242422P08	24" x 24" x 22"	8	1,765	0.30	0.40	65
FG865-242422P06	24" x 24" x 22"	6	1,767	0.30	0.40	52
FG865-242022P08	24" x 20" x 22"	8	1,410	0.30	0.40	65
FG865-242022P07	24" x 20" x 22"	7	1,515	0.30	0.40	57
FG865-242022P07	24" x 20" x 22"	5	1,508	0.30	0.40	40
FG865-202022P08	20" x 20" x 22"	8	1,185	0.30	0.40	58
FG865-202022P07	20" x 20" x 22"	7	1,315	0.30	0.40	45
FG865-202022P05	20" x 20" x 22"	5	1,240	0.30	0.40	41
FG865-241222P05	24" x 12" x 22"	5	885	0.30	0.40	38
FG865-241222P04	24" x 12" x 22"	4	880	0.30	0.40	32
FG865-241222P03	24" x 12" x 22"	3	882	0.30	0.40	29
FG885-242429P08	24" x 24" x 29"	8	2,515	0.35	0.45	91
FG865-242429P06	24" x 24" x 29"	6	2,509	0.35	0.45	77
FG865-241229P04	24" x 12" x 29"	4	1,264	0.35	0.45	50
FG865-241229P03	24" x 12" x 29"	3	1,254	0.35	0.45	39
FG865-242432P12	24" x 24" x 32"	12	2,510	0.38	0.47	129
FG865-241232P06	24" x 12" x 32"	6	1,254	0.38	0.47	73
FG865-242436P08	24" x 24" x 36"	8	2,420	0.38	0.52	107
FG865-242436P06	24" x 24" x 36"	6	1,765	0.38	0.52	85
FG865-242036P05	24" x 20" x 36"	5	1,500	0.38	0.52	75
FG865-241236P04	24" x 12" x 36"	4	1,220	0.38	0.52	57
FG865-241236P03	24" x 12" x 36"	3	885	0.38	0.52	49

# GAFCO



## Synthetic Bag Filters - Eff.95% - Technical Specs

Model Code Number	Nominal Sizes H X W X D (INCHES/MM)	Number of Pockets	Rated Air Flow (CFM)	Initial Resistance (Inches w.g.)	Final Resistance (Inches w.g.)	Media Area Sq.Ft.
SB95-242415P12	24" x 24" x 12"	12	1,400	0.30	0.40	67
SB95-242412P06	24" x 24" x 12"	6	1,125	0.30	0.40	51
SB95-122422P03	12" x 24" x 12"	3	700	0.30	0.40	30
SB95-242422P10	24" x 24" x 22"	10	1,870	0.35	0.45	77
SB95-242422P08	24" x 24" x 22"	8	1,790	0.35	0.45	65
SB95-242422P06	24" x 24" x 22"	6	1,745	0.35	0.45	52
SB95-242022P08	24" x 20" x 22"	8	1,580	0.35	0.45	65
SB95-242022P07	24" x 20" x 22"	7	1,510	0.35	0.45	57
SB95-242022P05	24" x 20" x 22"	5	1,450	0.35	0.45	40
SB95-202022P08	20" x 20" x 22"	8	1,180	0.35	0.45	58
SB95-202022P07	20" x 20" x 22"	7	1,300	0.35	0.45	45
SB95-202022P05	20" x 20" x 22"	5	1,230	0.35	0.45	41
SB95-241222P05	24" x 12" x 22"	5	880	0.35	0.45	38
SB95-241222P04	24" x 12" x 22"	4	883	0.35	0.45	32
SB95-241222P03	24" x 12" x 22"	3	869	0.35	0.45	29
SB95-242429P08	24" x 24" x 29"	8	2,490	0.42	0.52	91
SB95-242429P06	24" x 24" x 29"	6	2,505	0.42	0.52	77
SB95-241229P04	24" x 12" x 29"	4	1,252	0.42	0.52	50
SB95-241229P03	24" x 12" x 29"	3	1,259	0.42	0.52	39
SB95-242432P12	24" x 24" x 32"	12	2,575	0.45	0.56	129
SB95-241232P06	24" x 12" x 32"	6	1,260	0.45	0.56	73
SB95-242436P08	24" x 24" x 36"	8	2,470	0.49	0.60	107
SB95-242436P06	24" x 24" x 36"	6	1,775	0.49	0.60	85
SB95-242036P05	24" x 20" x 36"	5	1,508	0.49	0.60	75
SB95-241236P04	24" x 12" x 36"	4	1,275	0.49	0.60	57
SB95-241236P03	24" x 12" x 36"	3	885	0.49	0.60	49

# GAFCO



## Synthetic Bag Filters - Eff.85% - Technical Specs

Filter Model Code Number	NOMINAL SIZES H X W X D (INCHES/MM)	Number Of Pockets	Rated Air Flow (CFM)	Initial Resistance (Inches w.g.)	Final Resistance (Inches w.g.)	Media Area Sq.Ft.
SB85-242412P12	24" x 24" x 12"	12	1505	0.28	0.38	59
SB85-242412P06	24" x 24" x 12"	6	825	0.28	0.38	27
SB85-122422P03	12" x 24" x 12"	3	735	0.28	0.38	26
SB85-242422P10	24" x 24" x 22"	10	1740	0.33	0.40	76
SB85-242422P08	24" x 24" x 22"	8	1745	0.33	0.40	61
SB85-242422P06	24" x 24" x 22"	6	1755	0.33	0.40	49
SB85-242022P08	24" x 20" x 22"	8	1398	0.33	0.40	59
SB85-242022P07	24" x 20" x 22"	7	1510	0.33	0.40	54
SB85-242022P07	24" x 20" x 22"	5	1505	0.33	0.40	35
SB85-202022P08	20" x 20" x 22"	8	1173	0.33	0.40	51
SB85-202022P07	20" x 20" x 22"	7	1299	0.33	0.40	46
SB85-202022P05	20" x 20" x 22"	5	1228	0.33	0.40	33
SB85-241222P05	24" x 12" x 22"	5	880	0.33	0.40	34
SB85-241222P04	24" x 12" x 22"	4	872	0.33	0.40	27
SB85-241222P03	24" x 12" x 22"	3	875	0.33	0.40	28
SB85-242429P08	24" x 24" x 29"	8	2501	0.39	0.44	86
SB85-242429P06	24" x 24" x 29"	6	2495	0.39	0.44	44
SB85-241229P04	24" x 12" x 29"	4	1252	0.39	0.44	42
SB85-241229P03	24" x 12" x 29"	3	1250	0.39	0.44	32
SB85-242432P12	24" x 24" x 32"	12	2,560	0.45	0.56	131
SB85-241232P06	24" x 12" x 32"	6	1,247	0.45	0.56	66
SB85-242436P08	24" x 24" x 36"	8	2,411	0.50	0.60	99
SB85-242436P06	24" x 24" x 36"	6	1,755	0.50	0.60	75
SB85-242036P05	24" x 20" x 36"	5	1,495	0.50	0.60	68
SB85-241236P04	24" x 12" x 36"	4	1,212	0.50	0.60	48
SB85-241236P03	24" x 12" x 36"	3	870	0.50	0.60	35



## Synthetic Bag Filters - Eff.65% - Technical Specs

Stock Code Number	NOMINAL SIZES H X W X D (INCHES/MM)	Number Of Pockets	Rated Air Flow (CFM)	Initial Resistance (Inches w.g.)	Final Resistance (Inches w.g.)	Media Area Sq.Ft.
SB65-242415P12	24" x 24" x 12"	12	1505	0.25	0.32	59
SB65-242412P06	24" x 24" x 12"	6	1095	0.25	0.32	46
SB65-122422P03	12" x 24" x 12"	3	950	0.25	0.32	38
SB65-242422P10	24" x 24" x 22"	10	1755	0.27	0.35	75
SB85-242422P08	24" x 24" x 22"	8	1757	0.27	0.35	57
SB65-242422P06	24" x 24" x 22"	6	1755	0.27	0.35	46
SB65-242022P08	24" x 20" x 22"	8	1405	0.27	0.35	57
SB65-242022P07	24" x 20" x 22"	7	1505	0.27	0.35	52
SB65-242022P07	24" x 20" x 22"	5	1503	0.27	0.35	39
SB65-202022P08	20" x 20" x 22"	8	1180	0.27	0.35	52
SB65-202022P07	20" x 20" x 22"	7	1308	0.27	0.35	45
SB65-202022P05	20" x 20" x 22"	5	1230	0.27	0.35	34
SB65-241222P05	24" x 12" x 22"	5	890	0.27	0.35	37
SB65-241222P04	24" x 12" x 22"	4	875	0.27	0.35	27
SB65-241222P03	24" x 12" x 22"	3	850	0.27	0.35	25
SB85-242429P08	24" x 24" x 29"	8	2510	0.32	0.40	88
SB65-242429P06	24" x 24" x 29"	6	2505	0.32	0.40	41
SB65-241229P04	24" x 12" x 29"	4	1257	0.32	0.40	44
SB65-241229P03	24" x 12" x 29"	3	1248	0.32	0.40	29
SB65-242432P12	24" x 24" x 32"	12	2,502	0.35	0.42	131
SB65-241232P06	24" x 12" x 32"	6	1,248	0.35	0.42	67
SB65-242436P08	24" x 24" x 36"	8	2,405	0.45	0.53	95
SB65-242436P06	24" x 24" x 36"	6	1,752	0.45	0.53	74
SB65-242036P05	24" x 20" x 36"	5	1,493	0.45	0.53	65
SB65-241236P04	24" x 12" x 36"	4	1,205	0.45	0.53	47
SB65-241236P03	24" x 12" x 36"	3	879	0.45	0.53	36

# GAFCO



## Synthetic Bag Filters - Eff.45% - Technical Specs

Stock Code Number	NOMINAL SIZES H X W X D (INCHES/MM)	Number Of Pockets	Rated Air Flow (CFM)	Initial Resistance (Inches w.g.)	Final Resistance (Inches w.g.)	Media Area Sq.Ft.
SB45-242415P12	24" x 24" x 12"	12	1505	0.20	0.28	59
SB45-242412P06	24" x 24" x 12"	6	1095	0.20	0.28	46
SB45-122422P03	12" x 24" x 12"	3	840	0.20	0.28	38
SB45-242422P10	24" x 24" x 22"	10	1755	0.25	0.32	75
SB45-242422P08	24" x 24" x 22"	8	1757	0.25	0.32	57
SB45-242422P06	24" x 24" x 22"	6	1755	0.25	0.32	46
SB45-242022P08	24" x 20" x 22"	8	1405	0.25	0.32	57
SB45-242022P07	24" x 20" x 22"	7	1505	0.25	0.32	52
SB45-242022P07	24" x 20" x 22"	5	1503	0.25	0.32	39
SB45-202022P08	20" x 20" x 22"	8	1180	0.25	0.32	52
SB45-202022P07	20" x 20" x 22"	7	1308	0.25	0.32	45
SB45-202022P05	20" x 20" x 22"	5	1230	0.25	0.32	34
SB45-241222P05	24" x 12" x 22"	5	880	0.25	0.32	37
SB45-241222P04	24" x 12" x 22"	4	875	0.25	0.32	27
SB45-241222P03	24" x 12" x 22"	3	877	0.25	0.32	25
SB45-242429P08	24" x 24" x 29"	8	2510	0.29	0.36	88
SB45-242429P06	24" x 24" x 29"	6	2505	0.29	0.36	41
SB45-241229P04	24" x 12" x 29"	4	1257	0.29	0.36	44
SB45-241229P03	24" x 12" x 29"	3	1248	0.29	0.36	29
SB45-242432P12	24" x 24" x 32"	12	2,502	0.33	0.40	131
SB45-241232P06	24" x 12" x 32"	6	1,248	0.33	0.40	67
SB45-242436P08	24" x 24" x 36"	8	2,405	0.38	0.45	95
SB45-242436P06	24" x 24" x 36"	6	1,752	0.38	0.45	74
SB45-242036P05	24" x 20" x 36"	5	1,493	0.38	0.45	65
SB45-241236P04	24" x 12" x 36"	4	1,205	0.38	0.45	47
SB45-241236P03	24" x 12" x 36"	3	980	0.38	0.45	36